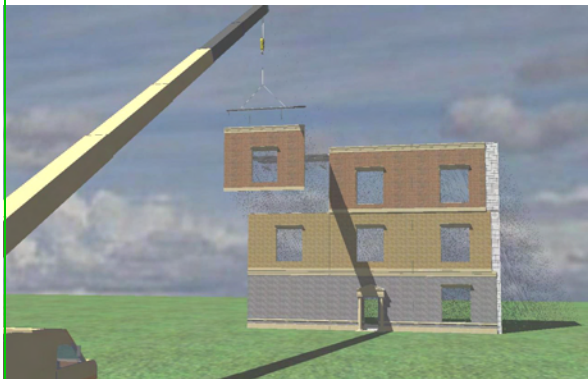
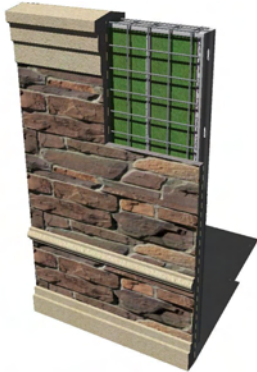


Smartwall

Patent No.US 7,681,368 B1 is a unique composite panel architectural precast concrete, galvanized steel, carbon fibers, vapor barrier, thermal break insulation. Our system provides a durable, high energy efficient insulation, with a proprietary encapsulation, and moisture barrier in the interior of the wall. The combinations of custom high strength polymer concrete, recycled steel, and carbon fibers reinforcement provide a flexible superior composite wall system. Principally used for light commercial and residential construction. The Smartwall is available in multiple cladding finishes including but not limited to pre-cast, brick, stucco, stone, marble, etc.



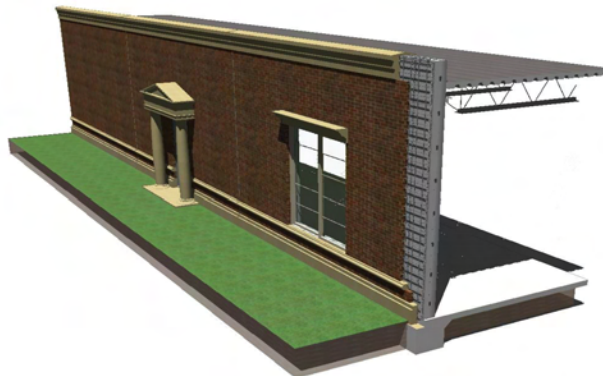
What are the ACI products?

ACI Products: Superwall and Smartwall, are made of proprietary steel profiles, reinforced concrete, carbon fiber mesh, thermal break and a multitude of cladding. This combination of elements forms a single composite panel that is ecologically sensitive, structurally superior, durable and energy efficient.

Appearance: The product versatility allows for many finishes including stucco, granite, marble, brick, precast etc. Our systems are designed to deliver buildings that resemble traditional construction.

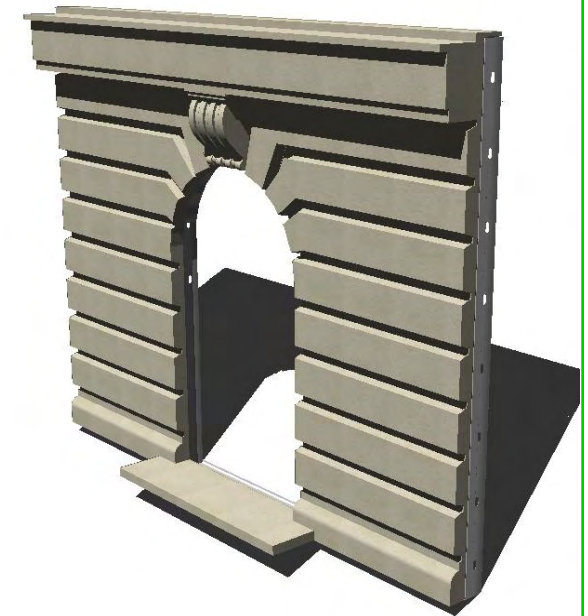
Eco-cost effective Fast Track construction is ideal for...

**Schools
Hospitals
Housing
Government Institutions
Reconstruction and Disaster Relief
High Rise**



American Craftsmen Inc.

**Innovative Construction
Eco-Conscious
Superwall & Smartwall**



Phone: (919) 845-0870

Fax: (919) 845-0860

er@americancraftsmeninc.com

www.americancraftsmeninc.com

9910 Strickland rd.
Raleigh, NC 27614

Technology Benefits

Builder Benefits:

- One-step fast track construction.
- Reduction in labor & material cost by 40%.
- Reduction on over all building cost.
- Green LEED certification on any structure.
- Friendly to all trades & labor efficient.
- Load bearing and fire rated wall assemblies
- Available in a multitude of cladding finishes including brick, precast, stone, & marble, granite, etc.
- Building envelope enclosure accelerated by 60%.

Owner/ Developer Benefits:

- Better resistant to earth quakes, fires, hurricanes and impacts.
- Resistant to moisture intrusion, mold, termites, and other insects.
- Significant savings on heating, cooling.
- Superior sound & insulation properties.
- Available in bullet & blast resistant levels.
- Green building LEED compliant.

Environmental Benefits:

- Recycled Content: Our Steel products are made from recycled steel. Our concrete can be supplemented with flyash and other natural sediments.
- Reduces construction waste to less than 1%.
- *Green house gases:* reduction of energy consumption when heating and cooling the building. The systems are engineered to allows for significant R values. The proprietary insulated clip connection isolates the steel stud from the precast concrete creating a true thermal break as well as noise reduction barrier.
- Water and cement usage for concrete is reduced significantly by approximately 80% in comparison to traditional tilt up , precast, and masonry block./brick construction.
- Transportation and Cranes: Due to light weight, thin-shell precast allows for dramatic cut backs on fuels and GHG emissions.

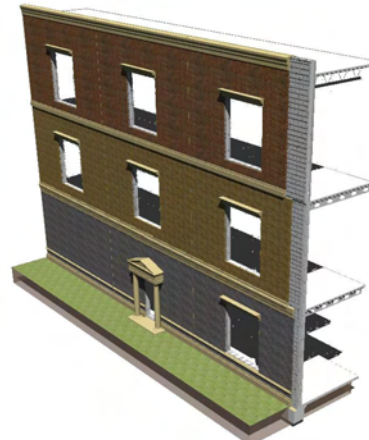
Mission

American Craftsmen Inc., (ACI) main objective is to exceed every expectation in continuing with our commitment to providing affordable sustainable building system, environmental stewardship, and preservation of human health. *Sustainable development* as defined at the United Nations 1983 *World Commission on Environment and Development (WCED)* is “Development that meets the needs of people living today without compromising the ability of future generations to meet their own needs.” Sustainable development requires a long-term vision of industrial progress, preserving the foundations upon which quality of life depends on and respect for global ecosystems. Our Company strives to create innovative eco-conscious building systems that account for the full life cycle of the building.

Partnerships and Licensing Opportunities

ACI seeks Exclusive Strategic Alliances to License fabricators and installers by offering ACI SuperWall & SmartWall Technology, Know How and Equipment to Qualified :

- Owners
- Developers
- Investors
- Fabricators
- Architects
- Engineers
- Contractors



Superwall

Patent No. US 7,278,244 a composite architectural and structural precast concrete galvanized steel building system. Composed of proprietary elaborated steel profiles, strip clip for suspension of custom high strength flyash concrete, carbon fiber reinforcement, thermal, vapor barrier, moisture insulation materials. Principally used for commercial construction. Available in a multiple cladding finishes including but not limited to pre-cast, brick, stucco, stone, marble, etc.

